

# Satellite Poster Display Unit

CN103\*

A range of stylish freestanding and desktop poster frames.



Freestanding A4 CN104

\*Freestanding A3 CN103

## features & benefits

- User-friendly system for displaying posters, offers, directional signs, menus and a host of other material
- Magnetic scratch resistant front screen holds the display material securely in place and lifts away for easy positioning of graphics
- Freestanding units have heavy base for additional stability



	Portrait	Landscape
Desktop A5	<b>CN115P</b>	<b>CN115L</b>
Desktop A4	<b>CN114P</b>	<b>CN114L</b>
Desktop A3	<b>CN113P</b>	<b>CN113L</b>



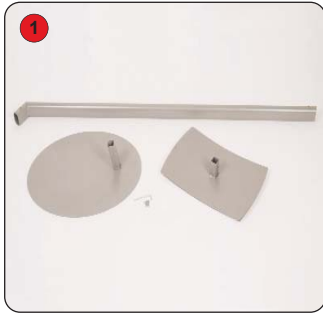
Freestanding models can accept both portrait or landscape format graphics

model	hardware spec (mm)	visible area (mm)	weight	additional info
A3 - Freestanding	1480 (h) x 350 (w) x 450 (d)	410 (h) x 287 (w)	11kg approx	Included in the freestanding kits: Top, base and pole. 2 x screws  Availability: Grey mild steel with brushed stainless steel header & footer strip
A4 - Freestanding	1400 (h) x 350 (w) x 450 (d)	287 (h) x 200 (w)	9.4kg approx	
A3 - Desktop (portrait)	505 (h) x 352 (w) x 220 (d)	410 (h) x 287 (w)	2.6kg approx	
A4 - Desktop (portrait)	350 (h) x 237 (w) x 150 (d)	287 (h) x 200 (w)	1.1kg approx	
A5 - Desktop (portrait)	248 (h) x 166 (w) x 120 (d)	200 (h) x 138 (w)	0.64kg approx	
A3 - Desktop (landscape)	383 (h) x 476 (w) x 220 (d)	287 (h) x 410 (w)	2.5kg approx	
A4 - Desktop (landscape)	261 (h) x 323 (w) x 150 (d)	200 (h) x 287 (w)	1.34kg approx	
A5 - Desktop (landscape)	186 (h) x 228 (w) x 100 (d)	138 (h) x 200 (w)	0.8kg approx	

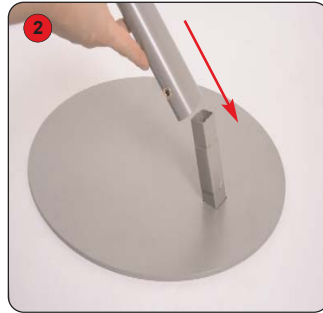
We are continually improving and modifying our product range and reserve the right to vary the specifications without prior notice. All dimensions and weights quoted are approximate and we accept no responsibility for variance. E&OE.

UJ140U REV 2 09/05

# Assembly Instructions



Kit includes: 1 x base, 1 x pole, 1 x top, 2 x screws and Allen key



Take the pole and slot onto the base, ensuring pole is leaning inwards and the hole is facing outwards.



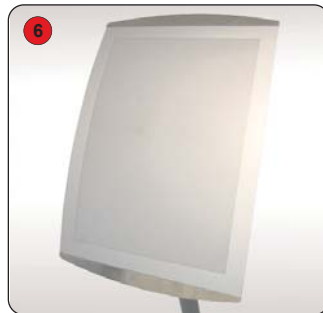
Take one of the screws and thread through the pole and into the base. Tighten with the Allen key.



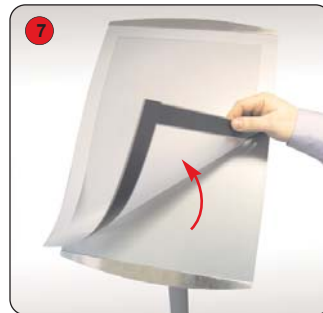
Slot the top onto the top of the pole, ensuring the hole in the top lines up with the hole on the pole.



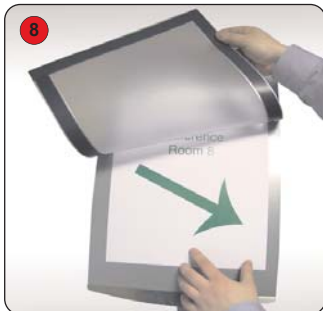
Thread other screw through the pole into the top. Tighten with the Allen key.



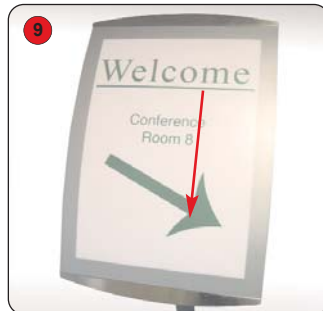
Now the unit is assembled, add the graphic. This process is the same for all sizes and formats of the Satellite Unit.



Lift up the front magnetic screen.



Position the graphic under the screen



Replace the screen, ensuring that the graphic is covered on all edges by the frame.



Other products in our literature holder range include:



## A Sign Board

Easy front loading, snap frame for indoor or outdoor use. Available in A1 sizes.



## Rope & Post

Strong, durable exhibition and event queue guidance system. Rope available in 4 colours, optional sign systems in a choice of sizes.



## Jazz

Literature rack to accommodate landscape or portrait format literature. Available in silver or black with 3 A4 pockets.